



LW3663EN



INTERMEDIATE

knitting

Designed by Julie Hines

What you will need:

RED HEART® Soft®: 23 balls
00002 Nature

Circular Knitting Needles: 13mm
[US 17] circular knitting needle 90
cm [36"] long

Note: straights or a shorter
circular can be used for pillow

Stitch markers, large cable needle,
46 x 46 cm [18" x 18"] pillow
form, yarn needle

TENSION/GAUGE: 10 sts = 10
cm [4"]; 12 rows = 10 cm [4"] in
pattern stitch holding 3 strands
of yarn together. **CHECK YOUR
TENSION/GAUGE.** Use any size
needles to obtain the tension/
gauge.



RED HEART® Soft®,
Art. 9809670 solid
colors available in 100
g (3.5 oz), 167 m (182
yd) balls



Twisted Taffy Throw & Pillow

These luscious comforts are knit using three strands of yarn held together as if it is one. Thus they are faster to make and cozier to relax with. The easy-care, non-allergenic features of this yarn are an added bonus.

Throw measures 114 x 142 cm [45" x 56"]

Pillow measures 46 x 46 cm [18" x 18"]

SPECIAL STITCHES

3/3 LC (3 over 3 Left Cross) = Slip next 3 sts to cable needle and hold in front, k3, then k3 from cable needle.

3/3 RC (3 over 3 Right Cross) = Slip next 3 sts to cable needle and hold in back, k3, then k3 from cable needle.

4/4 LC (4 over 4 Left Cross) = Slip next 4 sts to cable needle and hold in front, k4, then k4 from cable needle.

4/4 RC (4 over 4 Right Cross) = Slip next 4 sts to cable needle and hold in back, k4, then k4 from cable needle.

PATTERN STITCHES

Left Cable (over 8 sts)

Rows 1-8: Beginning with a right side row (knit), work in Stockinette st (knit on right side, purl on wrong side) for 8 rows.

Row 9 (right side – cable row): 4/4 LC.

Rows 10-16: Work in Stockinette st for 7 rows.

Repeat Rows 1-16 for Left Cable pattern.

Horseshoe Cable (over 12 sts)

Rows 1-4: Beginning with a right side row, work in Stockinette st for 4 rows.

Row 5 (right side – cable row): 3/3 RC, 3/3 LC

Rows 6-10: Work in Stockinette st for 5 rows. Repeat Rows 1-10 for Horseshoe Cable pattern.

Right Cable (over 8 sts)

Rows 1-8: Beginning with a right side row, work in Stockinette st for 8 rows.

Row 9 (right side – cable row): 4/4 RC.

Rows 10-16: Work in Stockinette st for 7 rows.

Repeat Rows 1-16 for Right Cable pattern.

Notes

1. Throw and pillow are worked holding 3 strands of yarn together throughout. Designer recommends rolling 3 strands into a single ball before beginning so that yarn does not tangle as easily.
2. Eighteen balls of Soft® yarn are needed to make the throw only. Five balls of Soft® yarn are needed to make the pillow only.
3. Work back and forth on circular needle as if working with straight needles.
4. Cable patterns can be worked by following written instructions or reading charts. Read right side rows of charts from right to left and wrong side rows from left to right.
5. Stitch markers are placed on both sides of each cable pattern. Slip markers when you come to them. Count the stitches between the markers from time to time to ensure that you still have the correct number.

THROW

With 3 strands of yarn held together, cast on 116 sts.

Knit 4 rows.

Row 1 (right side): K4, p2, place marker, k8 (for Left Cable), place marker, p2, k2, p2, place marker, k12 (for Horseshoe Cable), place marker, p2, k2, p2, place marker, k8 (for Left Cable), place marker, *p2, k2, p2, place marker, k12 (for Horseshoe Cable), place marker, p2, k2, p2, place marker, k8 (for Right Cable), place marker; repeat from * once more, p2, k4.

Row 2: K6, slip marker, p8, slip marker, k2, p2, k2, slip marker, p12, slip marker, k2, p2, k2, slip marker, p8, slip marker, *k2, p2, k2, slip marker, p12, slip marker, k2, p2, k2, slip marker, p8, slip marker; repeat from * once more, k6.

Continued...



Please Note: Print this pattern using Landscape Orientation.

Find more ideas & inspiration: www.redheart.co.uk

©2013 Coats & Clark

RedHeart.co.uk

Page 1 of 3

Row 3: K4, p2, slip marker, k8, slip marker, p2, k2, p2, slip marker, k12, slip marker, p2, k2, p2, slip marker, k8, slip marker, *p2, k2, p2, slip marker, k12, slip marker, p2, k2, p2, slip marker, k8, slip marker; repeat from * once more, p2, k4.

Row 4: Repeat Row 2.

Row 5: K4, p2, slip marker, work Row 5 of Left Cable pattern over next 8 sts, slip marker, p2, k2, p2, slip marker, work Row 5 of Horseshoe Cable pattern over next 12 sts, slip marker, p2, k2, p2, slip marker, work Row 5 of Left Cable pattern over next 8 sts, slip marker, *p2, k2, p2, slip marker, work Row 5 of Horseshoe Cable pattern over next 12 sts, slip marker, p2, k2, p2, slip marker, work Row 5 of Right Cable pattern over next 8 sts, slip marker; repeat from * once more, p2, k4.

Row 6: K6, slip marker, work next row of Right Cable pattern over next 8 sts, slip marker, k2, p2, k2, slip marker, work next row of Horseshoe Cable pattern over next 12 sts, slip marker, k2, p2, k2, slip marker, work next row of Right Cable pattern over next 8 sts, slip marker, *k2, p2, k2, slip marker, work next row of Horseshoe Cable pattern over next 12 sts, slip marker, k2, p2, k2, slip marker, work next row of Left Cable pattern over next 8 sts, slip marker; repeat from * once more, k6.

Row 7: K4, p2, slip marker, work next row of Left Cable pattern over next 8 sts, slip marker, p2, k2, p2, slip marker, work next row of Horseshoe Cable pattern over next 12 sts, slip marker, p2, k2, p2, slip marker, work next row of Left Cable pattern over next 8 sts, slip marker, *p2, k2, p2, slip marker, work next row of Horseshoe Cable pattern over next 12 sts, slip marker, p2, k2, p2, slip marker, work next row of Right Cable pattern over next 8 sts, slip marker; repeat from * once more, p2, k4.

Rows 8-170: Repeat last 2 rows until a total of 170 cable pattern rows (not including the first 4 knit rows) have been completed, working next row of each cable pattern between markers, and knitting the knit stitches and purling the purl stitches, as they appear, between cable patterns.

Knit 4 rows.

Cast off.

FINISHING

Weave in ends.

PILLOW

Front

With 3 strands of yarn held together, cast on 50 sts.

Row 1 (right side): K3, p2, place marker, k8 (for Left Cable), place marker, p2, k2, p2, place marker, k12 (for Horseshoe Cable), place marker, p2, k2, p2, place marker, k8 (for Right Cable), place marker, p2, k3.

Row 2: P3, k2, slip marker, p8, slip marker, k2, p2, k2, slip marker, p12, slip marker, k2, p2, k2, slip marker, p8, slip marker, k2, p3.

Row 3: K3, p2, slip marker, k8, slip marker, p2, k2, p2, slip marker, k12, slip marker, p2, k2, p2, slip marker, k8, slip marker, p2, k3.

Row 4: Repeat Row 2.

Row 5: K3, p2, slip marker, work Row 5 of Left Cable pattern over next 8 sts, slip marker, p2, k2, p2, slip marker, work Row 5 of Horseshoe Cable pattern over next 12 sts, slip marker, p2, k2, p2, slip marker, work Row 5 of Right Cable pattern over next 8 sts, slip marker, p2, k3.

Row 6: P3, k2, slip marker, work next row of Right Cable pattern over next 8 sts, slip marker, k2, p2, k2, slip marker, work next row of Horseshoe Cable pattern over next 12 sts, slip marker, k2, p2, k2, slip marker, work next row of Left Cable pattern over next 8 sts, slip marker, k2, p3.

Row 7: K3, p2, slip marker, work next row of Left Cable pattern over next 8 sts, slip marker, p2, k2, p2, slip marker, work next row of Horseshoe Cable pattern over next 12 sts, slip marker, p2, k2, p2, slip marker, work next row of Right Cable pattern over next 8 sts, slip marker, p2, k3.

Rows 8-48: Repeat last 2 rows until a total of 48 rows have been completed, working next row of each cable pattern between markers, and knitting the knit stitches and purling the purl stitches, as they appear, between cable patterns.

Cast off.

Back

Work same as Front.

FINISHING

With wrong sides of pieces together, sew 3 sides of pillow front and pillow back together, taking care to line up the ends of the cables. Insert the pillow form and sew last side closed. Weave in ends.

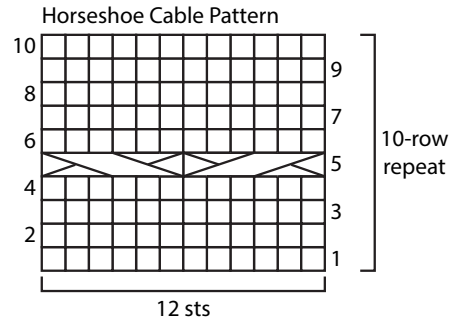
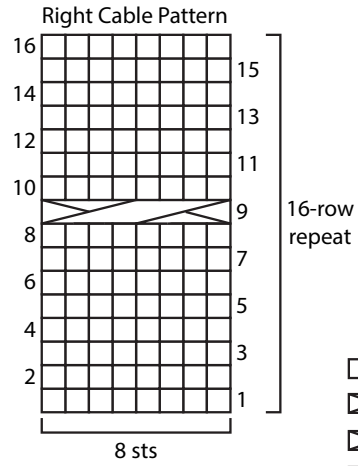
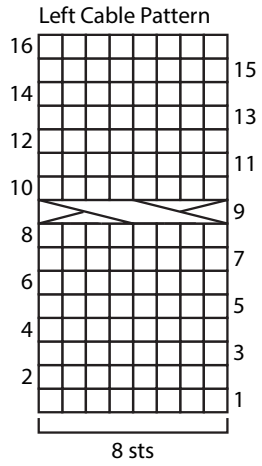
Abbreviations





cm = centimeters; **k** = knit; **mm** = millimeters; **p** = purl; **St st** = Stockinette stitch; **st(s)** = stitch(es); * **or** ** = repeat whatever follows the * or ** as indicated.

see chart on next page...



Please Note: Print this pattern using Landscape Orientation.



- k on RS, p on WS
-  3/3 LC
-  3/3 RC
-  4/4 LC
-  4/4 RC



Please Note: Print this pattern using Landscape Orientation.